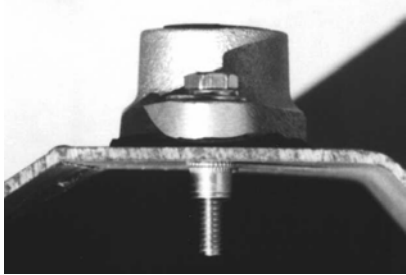




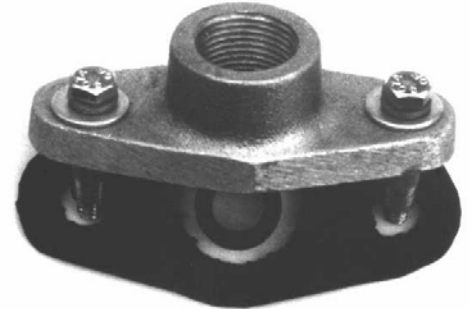
SIGNAL MOUNTING EQUIPMENT

FREY MANUFACTURING CORPORATION

13150 STEWART AVE., NORWOOD, MN 55368-9675
VOICE/FAX PHONE (952) 467-4402
www.FreyMfgCorp.com



INFORMATION FOR KBR - 3/4" PIPE THREAD HUB



KBR DESCRIPTION:

The KBR hub was originally designed for new construction or retrofitting for Emergency Vehicle Pre-emptive (EVP) detectors on mast arms, poles and other supporting members. The KBR Hub meets the requirements of the National Electrical Code (NEC) 370-17b for grounding requirements. The KBR Hub can be field located using the supplied removable template for the best-intended use before attaching to the supporting member. No welding, sand blasting, or painting of the supporting member is required from the installation of the KBR Hub. Since it is a standard female 3/4" (approx. 20 mm) pipe thread, this hub can be used for several other applications, i.e. cameras, banners, signs etc. The captive fasteners require a setting tool available from Frey Manufacturing Corporation or your local tool supplier. The KBR hub comes packaged with casting, gasket, bushing, captive fasteners, bolts, flat & lock washers, hole template and instructions. Drawings (English / Metric), and additional information is available from Frey Manufacturing Corp. The KBR hub is a stock item. Visit our website for installation pictures and drawings.

KBR PRICING: Ask For Stock Number KBR Description 3/4" PIPE THREAD HUB

Contact your local Distributor or Frey Manufacturing Corporation for current pricing and quantity discounts.

CAPTIVE FASTNER SETTING TOOL:

Contact Frey Manufacturing Corporation for features and current pricing for setting tool below.

Wrench Tool ----- Catalog No. WT1/4





**FREY MANUFACTURING CORPORATION
KBR 3/4" Pipe Thread Hub**