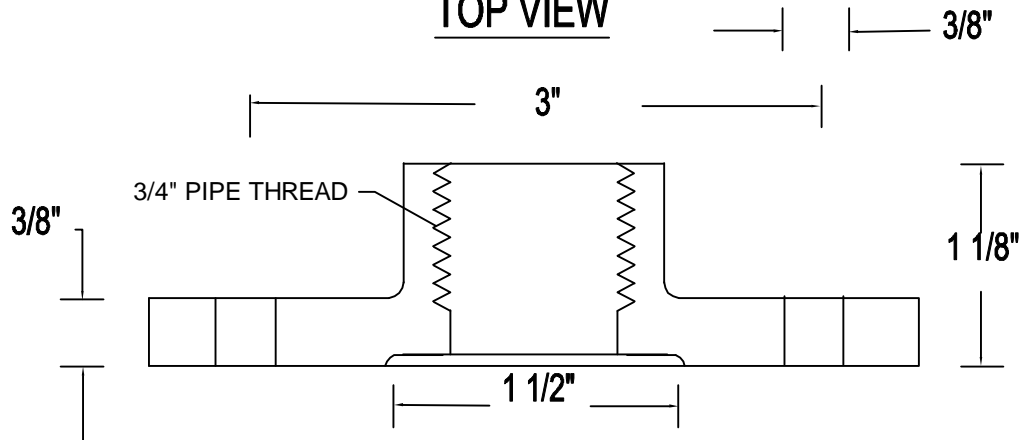
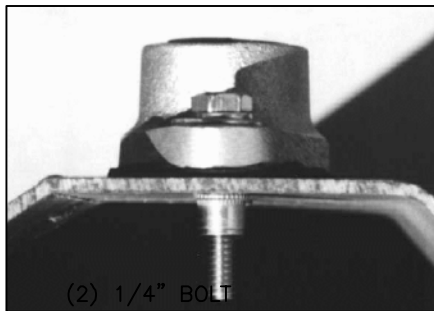
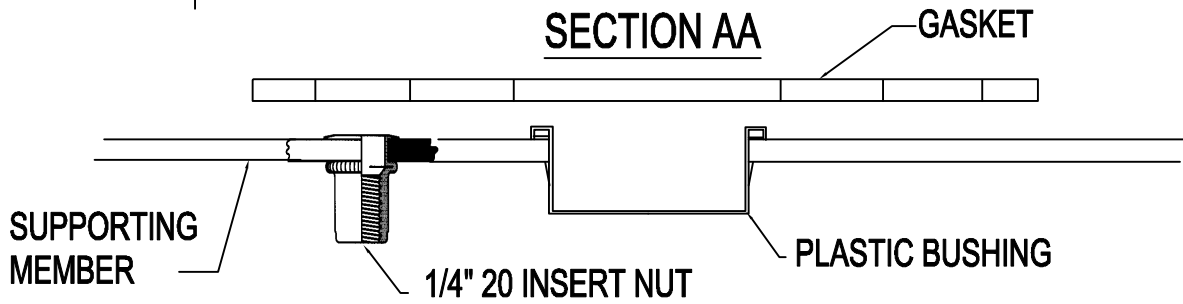


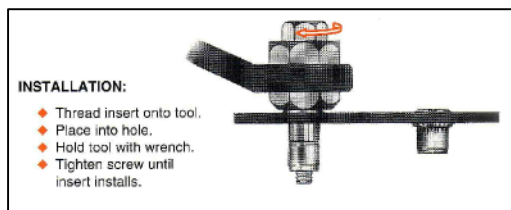
TOP VIEW



SECTION AA



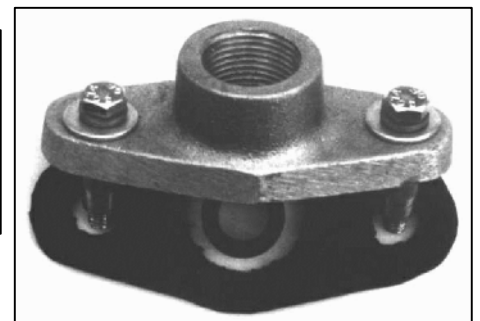
(2) 1/4" BOLT



INSTALLATION:

- ◆ Thread insert onto tool.
- ◆ Place into hole.
- ◆ Hold tool with wrench.
- ◆ Tighten screw until insert installs.

INSERT NUT INSTALLATION WITH
WT 1/4" 1/4" WRENCH TOOL



NOTE: INSERT NUTS MUST BE
INSTALLED WITH A
INSERT NUT SETTING TOOL.
AVAILABLE SEPARATELY.

(2) 1/4" BOLT PIPE THREAD HUB SUPPLIED HARDWARE

HARDWARE MEETS OR EXCEEDS STATE SPECIFICATIONS

- | | |
|----------------------------------------|------------------------------------------------------|
| (1) 11KBR 3/4" PT HUB ALUMINUM CASTING | (2) 1/4" INSERT NUT |
| (1) HOLE TEMPLATE | (1) GASKET |
| (2) 1/4" BOLT | (2) 3/4" PLASTIC BUSHING |
| (2) 1/4" SPRING LOCK WASHER | APPLY ANTI-SEIZE LUBRICANT TO ALL THREADED SURFACES. |

NOTE: ALSO AVAILABLE FOR 1" THREAD , SEE DWG 15.1

NOT TO SCALE

<p>FREY Manufacturing Corp. www.FreyMfgCorp.com Made in USA Patent Pending Phone: 952-467-4402</p>	<p>KBR - 3/4" PIPE THREAD HUB</p>	DATE	DWG. NO.	REV.
		09-30-99	15	1