

# SIGNAL MOUNTING HARDWARE



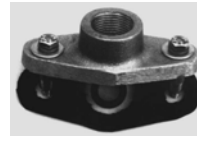
Thinking of upgrading your intersection??



Rust and paint problems??



Specify  
**FREY**  
MANUFACTURING CORPORATION  
Signal Mounting Products

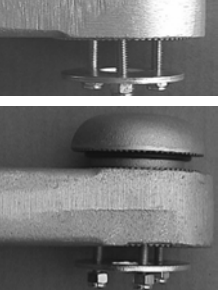
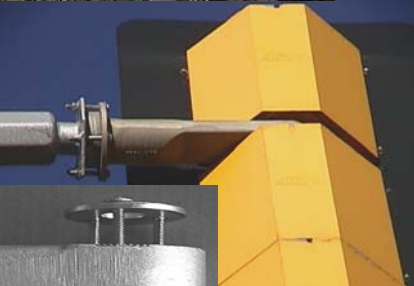


5' Mast Arm Extension

3/4" PT Hub for EVP

Universal Adapter

Mini Mast Arm



**Break away design to help protect the mast arm or pole from strike damage.**  
If you're going to lose the signal anyway, don't damage the expensive support member too!

## ADVANTAGES OF THE **FREY** POLE MOUNTING SYSTEM

- \* No banding necessary, or rust damage on the poles from banding.
- \* No set screws that get loose; and no painting required.
- \* Reduced personnel exposure, and down time in intersections.
- \* Clean looking installation using the same equipment as on the mast arms. Can be mounted anywhere on the pole to avoid traffic.
- \* Easy to field adjust with tapered washers, and aim toward traffic.
- \* Multiple configurations using the same signal mount for ease of installation in field conditions.
- \* The maintenance shops only need a small inventory of equipment in stock for immediate dispatch, freeing up useful shop space.
- \* The initial installed equipment cost is less than the pipe fitted pole mounting arrangements, is easier and costs less to replace if required.

**Contractors can only bid to install equipment that you specify!**  
**Specify the best from:**

**FREY**

MANUFACTURING CORPORATION

13150 STEWART AVE. \* NORWOOD, MN 55368-9675

VOICE/FAX PHONE (952) 467-4402 WEBSITE: [www.FreyMfgCorp.com](http://www.FreyMfgCorp.com)