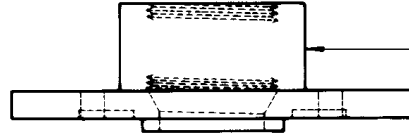


NOTES:

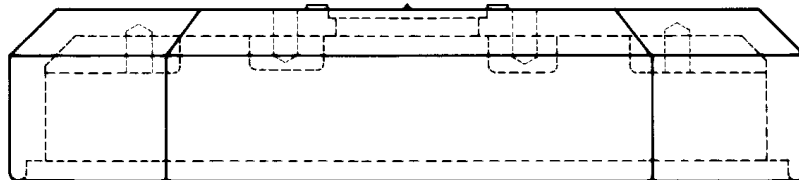
1. REVERSIBLE SIDE HUB MAY BE USED AS SHOWN FOR MOUNTING TAPERED WASHERS AND ONE-WAY OR TWO-WAY MOUNTS. BY REVERSING THIS SIDE HUB, A 1 1/2" THREADED PIPE EXTENSION MAY BE USED.
2. THE COVER IS DESIGNED TO ACCOMODATE DIRECT MOUNTING OF A SIGNAL OR SET OF VERTICALLY MOUNTED SIGNALS. COVER

HUB MAY BE USED FOR 1 1/2" PIPE THREAD EXTENSION OR BLANK COVER MAY BE USED WHERE SIDE MOUNTED DEVICES ONLY ARE REQUIRED.

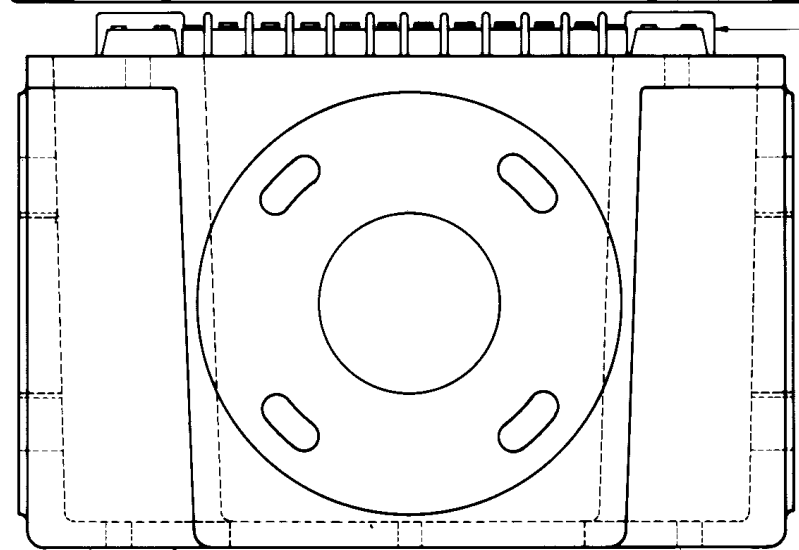
3. ALL BOLTS, NUTS, AND WASHERS SHALL BE AS REGULARLY SUPPLIED BY THE MANUFACTURER.
4. ALL CAST ITEMS WILL BE HIGH STRENGTH CAST ALUMINUM.



COVER HUB
45 E
FOR TOP ONLY

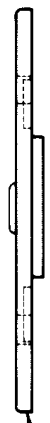


COVER
45 D

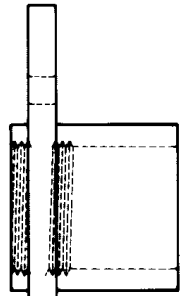


TERMINAL BLOCKS

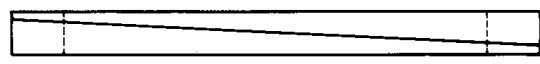
TERMINAL BOX 45 A



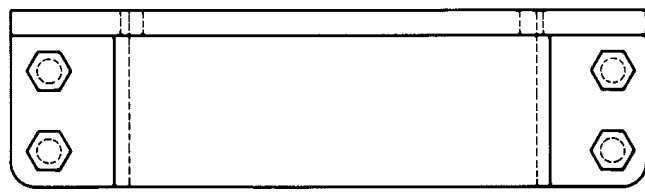
45 C
BLANK
FOR TOP OF COVER
OR ANY OF FOUR
SIDES ON TERMINAL
BOX



45 B
REVERSIBLE
SIDE HUB
FOR ANY OF
FOUR SIDES



TAPERED WASHERS
45 F (4") 45 G (5")



PEDESTAL POLE
TOP ADAPTER
45 H (4") 45 J (5")



TOP OF 4" OR 5"
PEDESTAL POLE

TERMINAL BOX ASSEMBLY

DATE
5-01

Frey Manufacturing Corporation
13150 STEWART AVE., NORWOOD, MN 55368-9675
VOICE/FAX 952-467-4402

DWG NO. REV
6