

35E and 35P INSTALLATION INSTRUCTIONS



Place the adjustment 11R Ball onto the 2 3/8" OD tenon. Sandwich the adjustment 11R Ball between the mount and flange. (Not all flange adapters shown). "TOP" on 35E casting needs to be facing skyward or toward the Red signal.

Using a "C" clamp to hold mount to flange, lubricate bolt threads and loosely install the top two bolt sets. Remove clamp, aim and level mount in the general direction of the field requirements by loosening/tightening nuts.

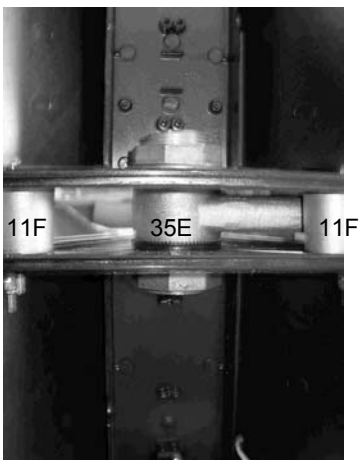


35E Elevator Plumbizer

35P Pedestrian Plumbizer

Lubricate and install bottom two bolt sets, make final field aiming adjustments and tighten hardware. Note that dry threads of 3/8" Stainless Steel hardware require only 20 ft. lbs. of torque, greater values may possibly damage threads.

Lubricate threads with anti-sieze compound and loosely install signal end with 25MB Bushing and 25PN Lock Nut. Aim signals and tighten nut(s).



35E Elevator Plumbizer shown installed in vehicle signals with 11F Spacers, one on each side as required for 4 and 5 section vehicle signals.

Notes:

Lubricated stainless steel hardware can withstand greater torques than un-lubricated threads. We recommend being familiar with torque values prior to field installation. Loosen opposing nut(s) adequately before tightening one when making adjustments. Tighten all nuts.

11F Spacers are only required for 4 and 5 section vehicle signals mounted vertically, or for any vehicle signals mounted horizontally. 11F Spacers are sold separately.

These mounts are compatible with plastic or aluminum signals, new or retrofit pole and mast arm flanges and flange adapters.

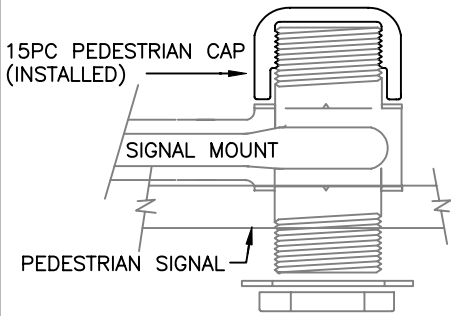
Additional information and drawings available from your distributor, or on our web site:

www.FreyMfgCorp.com

Or by contacting us at:

Frey Manufacturing Corp.
13150 Stewart Ave.
Norwood, MN, USA 55368
V/F: 952-467-4402
Cell: 612-790-2797
E-mail: FreyMfg@aol.com

Made in U.S.A.



15PC PEDESTRIAN CAP (OPTIONAL)

OPTIONAL EQUIPMENT

(2) 11F SPACERS REQUIRED FOR 4-5 SECTION PLASTIC SIGNALS, OR HORIZONTAL MOUNTING, MAY BE REQUIRED ON ALL VEHICLE SIGNALS PER JOB SPECIFICATIONS. SEE FMC DWG. 5A.

(1) 15PC PEDESTRIAN CAP FOR PEDESTRIAN SIGNAL MOUNTING (SEE DWG. 9.1.0.)

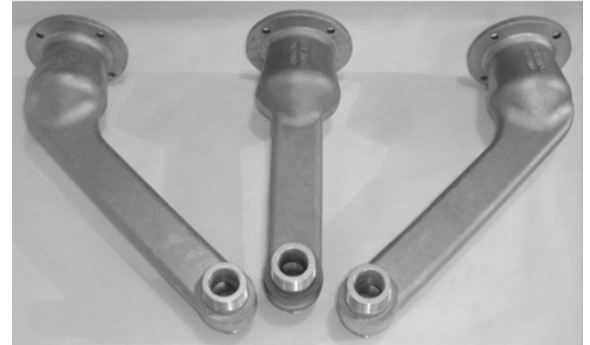
35E or 45V SUPPLIED HARDWARE ASSEMBLY

HARDWARE MEETS OR EXCEEDS Mn/DOT SPECIFICATIONS

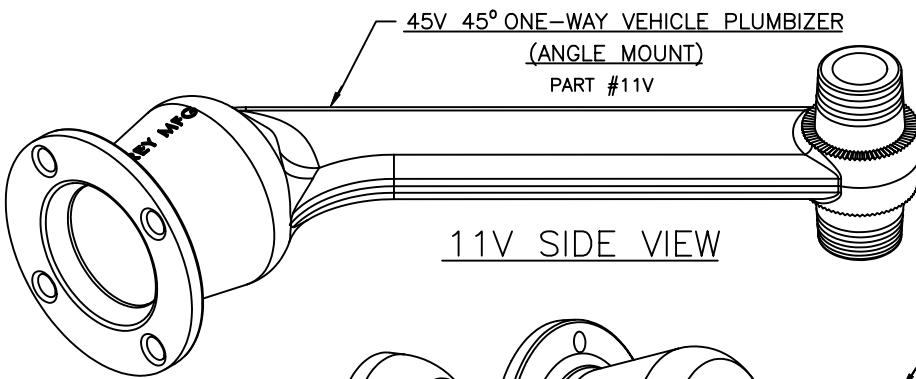
- (1) 11E OR 11V PLUMBIZER CASTING
- (1) 11R BALL CASTING
- (4) 3/8" X 2 1/2" BOLT
- (8) 3/8" FLAT WASHER
- (4) 3/8" SPRING LOCK WASHER
- (4) 3/8" NUT
- (2) 25PN 1 1/2" PIPE THREAD LOCK NUT
- (2) 25MB 2" ID 10 Ga. MACHINE BUSHING (FLAT WASHER)

NOTE:

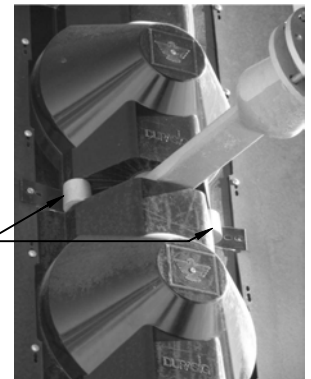
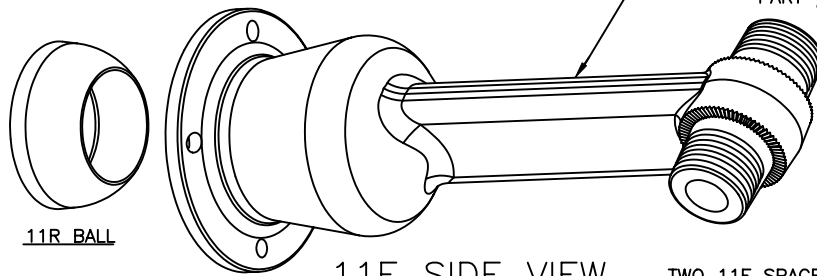
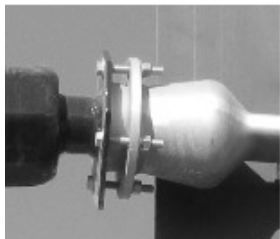
APPLY ANTI-SEIZE LUBRICANT TO ALL THREADED SURFACES.



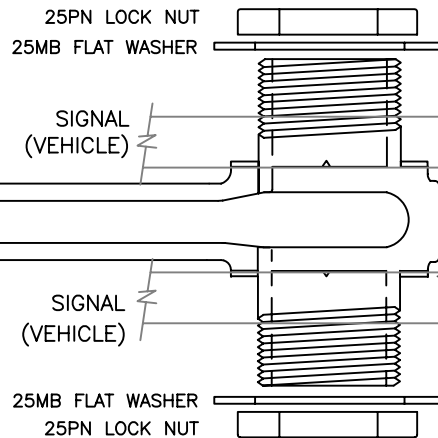
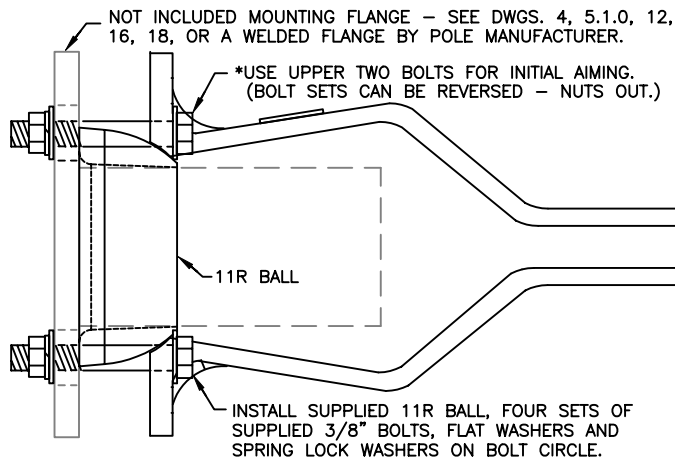
CASTINGS ARE REVERSABLE FOR PED MOUNTS



35E ELEVATOR PLUMBIZER (STRAIGHT MOUNT) PART #11E



TWO 11F SPACERS



*NOTE: MAKE SURE OPPOSITE BOLT(S) IS LOOSE PRIOR TO TIGHTENING NUT WHEN MAKING ADJUSTMENTS. CASTING WILL NOT BEND.

35E OR 45V PLUMBIZER ASSEMBLY

35E and 45V PLUMBIZER INSTALLATION

DATE
02-09-09

Frey Manufacturing Corporation
13150 STEWART AVE., NORWOOD, MN 55368-9675
VOICE/FAX 952-467-4402

DWG NO. **9.1** REV **1**